



# Warratina



SUMMER EDITION  
JAN/FEB 2014

## Retail Newsletter

## Latest News & Events

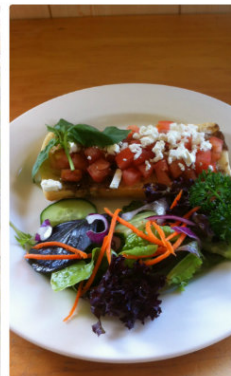
*- With Annemarie Manders*



Thank you to everyone who came out to our Lavender Harvest Weekend in November! The weekend was a great success and it was wonderful to see so many faces!

Even though the festival has finished, we are still harvesting lavender throughout the summer months. Farm staff are busy drying and stripping lavender over Christmas and this is a great opportunity to get up close by taking a tour to learn about the harvesting process. The tours run daily at 11am and 2pm and are \$5pp for a minimum of 4 guests.

We also currently have a magnificent display of roses to view while walking around the gardens. Come along these school holidays and enjoy a beautiful visit to our Tea Room! We are only closed Christmas Day and open Boxing Day and New Years Day.



## WARRATINA LAVENDER FARM

Warratina Lavender Farm had its beginnings in 1991 when Annemarie Manders decided on growing lavender for a hobby on a little plot on land which had once been an old cherry orchard. Today the farm has over 10,000 lavender plants and caters to tourists from around the world with warm hospitality and beautiful products.

Warratina Lavender Farm is situated in tranquil surroundings in the Yarra Valley foothills of the beautiful Dandenong Ranges. Walks can be enjoyed through the fields of lavender and display gardens. See how the plants are commercially grown and explore the beautiful range of products available in the gift shop and enjoy a meal at the Tea Rooms.

## COMING SOON

### February

14-16 Seymour Alternative Farming Expo, Seymour Victoria

28-2/3 Mind Body Spirit Festival, Brisbane Convention Centre, Brisbane, Qld

**The Lavender Harvest Season** will run through to early January at Warratina Lavender Farm. Come along and learn all about the harvesting process!

## CONTACT US

Warratina Lavender Farm is open Wednesday to Monday from 9am to 5pm and closed all day Tuesday. Group bookings on any day are available by appointment

Please contact us on:  
Tel: (03) 5964 4650 Fax: (03) 5964 4658  
enquiries@warratinalavender.com.au

105 Quayle Road, Wandin Yallock  
Victoria, 3139Melwav Ref: 121 F1

## Find us on Facebook!

Warratina Lavender Farm has its very own Facebook fan page for users of the site to see upcoming events on the farm, read all the latest news and receive product discounts to members! Simply search 'Warratina Lavender Farm' and click 'LIKE'

[www.warratinalavender.com.au](http://www.warratinalavender.com.au)

## Feature Product

# Lavender Honey Pots

Recovering from winter's colds and flu's can be a long and dreary process.

A little Lavender Honey mixed with some freshly squeezed lemon juice can help relieve symptoms. Also really tasty drizzled over poached pears as a special desert, on toast & crumpets.

Available in 45g, 140g, & 360g jars.

From \$4.50 each



## Farm Event

# Warratina Harvest Season

November - January

Come and see the breathtaking fields of blooming lavender! See traditional harvesting methods, visit the lavender drying shed, and take a stroll through the beautiful gardens.

Visit the Lavender Cottage Tea Rooms & enjoy lavender scones plus lavender ice cream!

## New Year Specials

### Lavender Oil Roll-On

This fantastic 12ml glass roll-on Essential Lavender Oil is the perfect travel companion suitable for use as a perfume, treating headaches, aid sleeping, insect repellent and many other uses.

\$20.00 each SAVE \$1.50!



### 40 Hour Soy Wax Candle

A great way to freshen your home is with lavender candles, incense or room freshener!

This beautiful soy wax candle will fill your home for hours. Poured in a glass jar to prevent dripping, the candle will burn for up to 40 hours. The flame can be easily snuffed out with accompanying glass lid.

\$24.00 each SAVE \$1.50



### DISCOUNT COUPON

Mention this coupon in the **Lavender Cottage Tea Rooms** and receive a *complimentary* 25g Lavender Soap when you spend over \$50 in a single transaction on meals or giftware

Offer expires 31/1/2014

## Lavender Cottage Tea Room

# Summer Menu Available

The Lavender Cottage Tea Room on Warratina Lavender Farm is the perfect little café to sit down and relax and enjoy a delicious meal and hot beverage. Our new summer menu features all our popular favourites plus our new Gourmet Platters to enjoy overlooking the harvest fields. We currently have a Summer Special's Menu to choose from and you will be sure to find something you'll love for morning tea, a light lunch or an afternoon tea of Devonshire Tea with a nice cuppa. We even have Lavender ICECREAM to enjoy!

Adjoining the Tea Room is our beautiful gift store featuring a wide range of lovely lavender-themed items and Warratina Lavender Farm products. We also have a special Christmas range which will be available from early November.

**We are currently taking bookings for our catering and venue hire packages for Weddings, Meetings & Events where you can reserve a few tables of hire the venue for work, social or friends and family. Call 03 59644650 to book!**

